

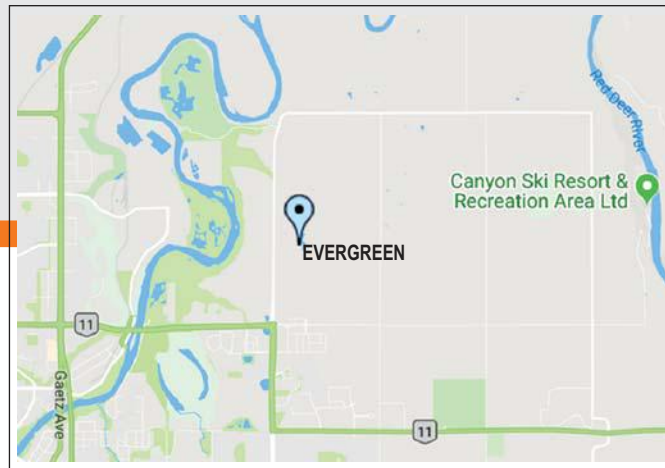
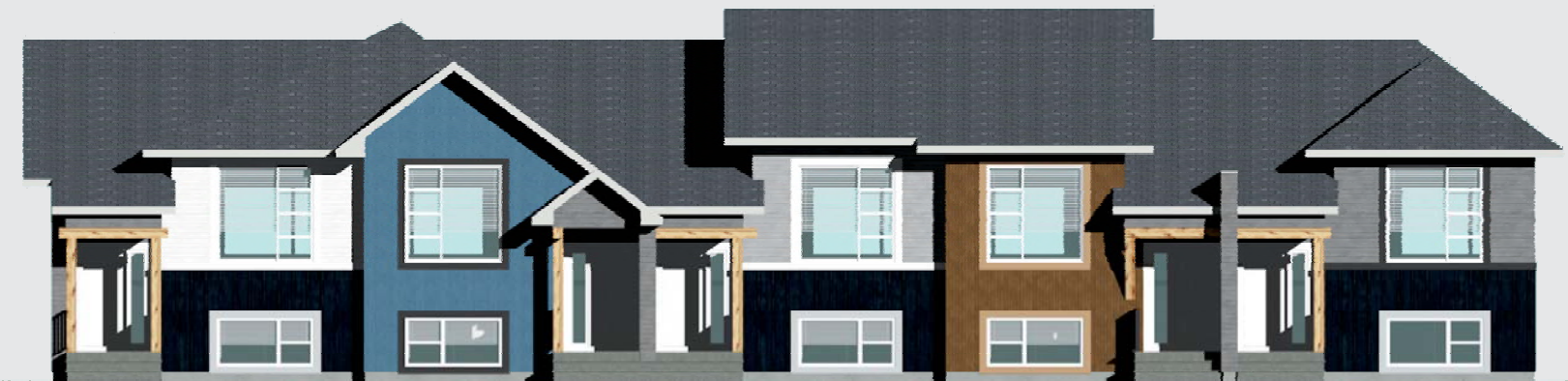


ELM PARK STREET TOWNS

*Your chance to be
Neighbours with Nature
is here now.*



ELM PARK STREET TOWNS



- An internal looped multi-use trail that connects with Red Deer's world-class trail system.
- Convenient shopping, fitness and dining - Clearview Market Square is just south of Evergreen
- Free recreation in surrounding areas including 9 km of hiking trails, a natural waterpark, 15 km of groomed cross country ski trails, off-leash dog park, fishing ponds and a canoe and kayak launch.

*Welcome to Evergreen...
your new life in your new home.*

Starting for less than \$270,000, embrace life in a 3 bedroom townhome in the simplicity of nature. No condo fees... fully landscaped... naturally exquisite. Replace traffic with trails and long line-ups with wildlife in Red Deer's most relaxing community located near Clearview Market.



www.masonmartinhomes.com

For more information phone/text 403-588-2550

- 2017 RED DEER EXPRESS BEST HOME BUILDER SILVER
- 2017 HOMEOWNER MARK OF EXCELLENCE
- 2016 BEST NEW HOME BETWEEN \$600,000 AND \$674,999
- 2016 BEST NEW HOME BETWEEN \$375,000 AND \$449,999
- 2016 BEST NEW HOME UP TO \$249,999
- 2015 BEST NEW ESTATE HOME OVER \$1,500,000
- 2015 BEST NEW HOME BETWEEN \$600,000 AND \$674,999
- 2014 BEST NEW HOME BETWEEN \$600,000 AND \$674,999
- 2012 BUILDER OF THE YEAR LARGE VOLUME



www.masonmartinhomes.com

For more information phone/text 403-588-2550



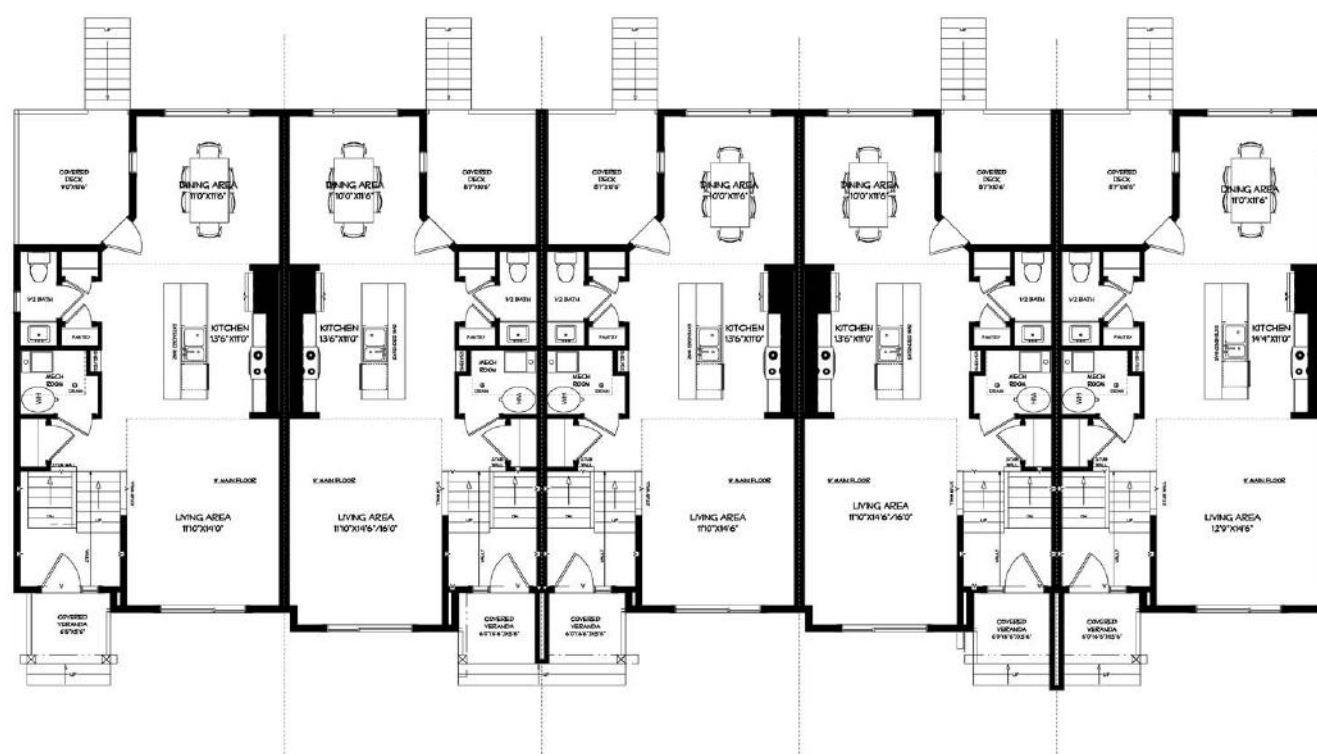
ELM PARK STREET TOWNS

3 bedroom townhouses

starting at

\$269,900

NO CONDO FEES



INTERIOR

- 3 COLOR PALETTES
- FLAT PANEL TEXTURED MELAMINE CABINETS
 - WITH 39" HIGH UPPER CABINETS AND A SET OF POT & PAN DRAWERS
- QUARTZ COUNTERTOPS WITH UNDER MOUNT SINKS THROUGHOUT
- DELTA OR MOEN FAUCETS WITH CHROME FINISH
- FULL HEIGHT TILED KITCHEN BACKSPLASH
- TILE AROUND TUB/SHOWER UNITS
- TILE ON VANITY
- STAINLESS STEEL WHIRLPOOL APPLIANCES
- WOOD GRAIN VINYL PLANK THROUGHOUT MAIN FLOOR AND BATHROOMS
- CARPET THROUGHOUT BASEMENT (EXCEPT BATHROOMS AND LAUNDRY)
- ONE-PIECE TUB/SHOWER UNITS
- 3 1/2" CASING AND 4" BASEBOARDS (FLAT PROFILE)

EXTERIOR

- PREMIUM VINYL SIDING AND CORRUGATED METAL ACCENT
- SMART BOARD TRIM AROUND FRONT WINDOWS AND DOORS
- LIFETIME ASPHALT SHINGLES
- CONCRETE FRONT STEPS
- DURADEK REAR DECK
- ALUMINUM RAILING ON ALL DECKS
- VINYL FENCE IN REAR
- SOD IN FRONT AND REAR
- ALUMINUM SOFFIT AND FASCIA

MECHANICAL

- HEAT RECOVERY VENTILATION SYSTEM
- LOW FLUSH TOILETS
- HIGH EFFICIENCY FURNACE
- 40 GALLON HOT WATER TANK
- PROGRAMMABLE THERMOSTAT
- SPRAY FOAM RIM JOISTS
- LED LIGHTS AND LED POT LIGHTS
- DUCTWORK CLEANED PRIOR TO POSSESSION

STRUCTURE

- 24" ON CENTER 2X6 WALLS
- PARTY WALL WITH 2X6 STUDS, 16" ON CENTER AND 5/8" DRYWALL
- ROXUL SAFE AND SOUND WITH RESILIENT CHANNEL AND 1" SPACE

ADDITIONAL

- LEGAL FEES COVERED WITH USE OF MASON MARTIN HOMES LAWYER
- WARRANTY COVERED BY ALBERTA NEW HOME WARRANTY
- 2 WARRANTY AND CUSTOMER SATISFACTION INSPECTIONS AFTER POSSESSION